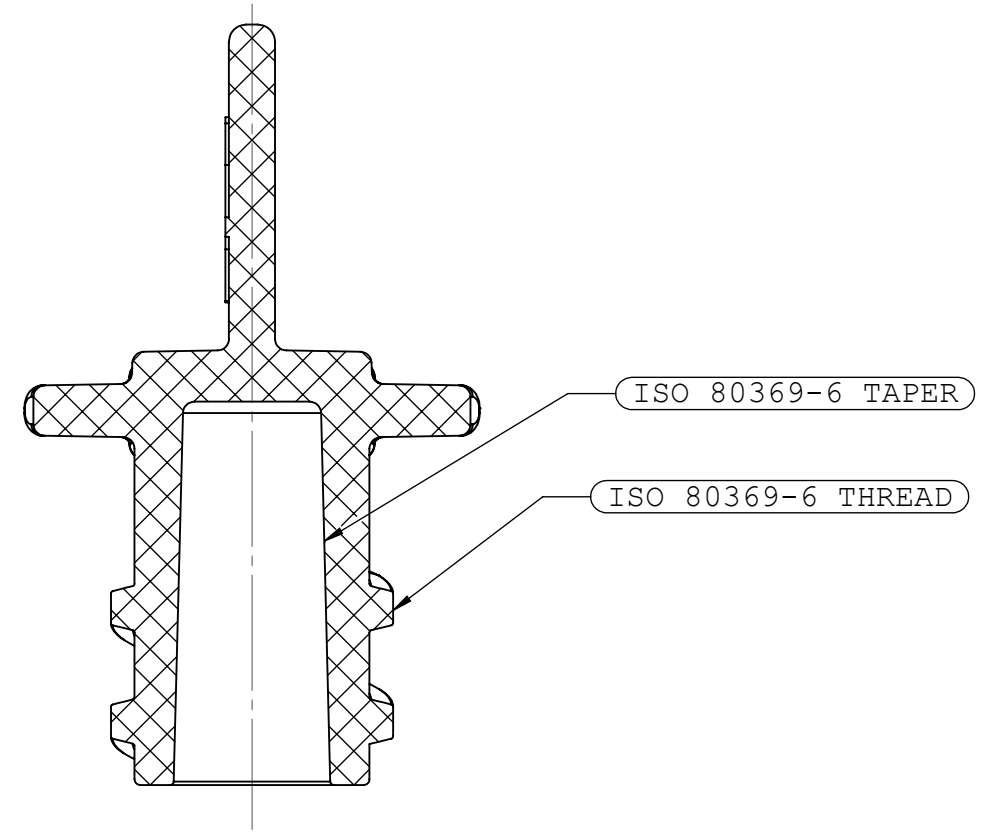
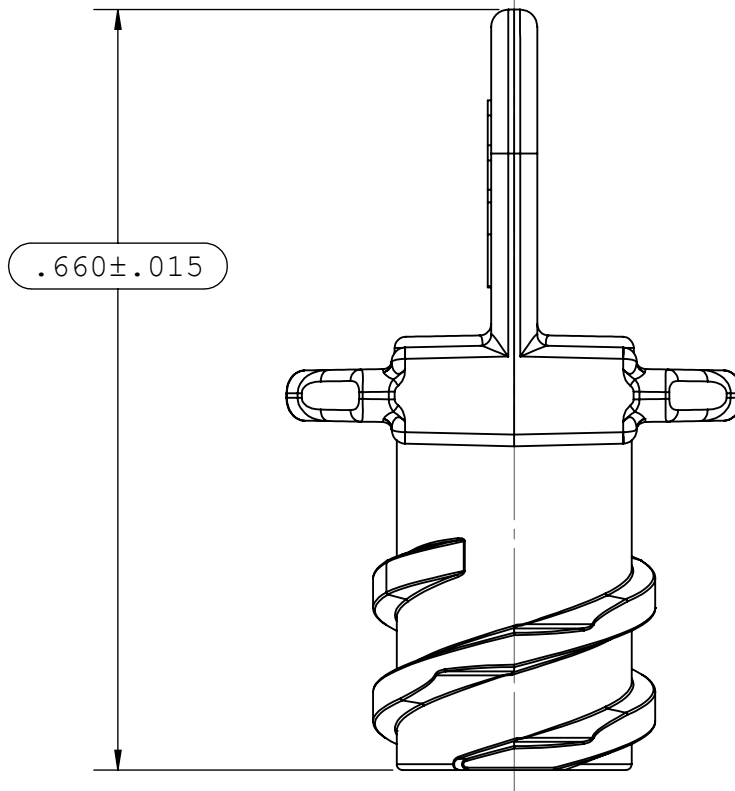
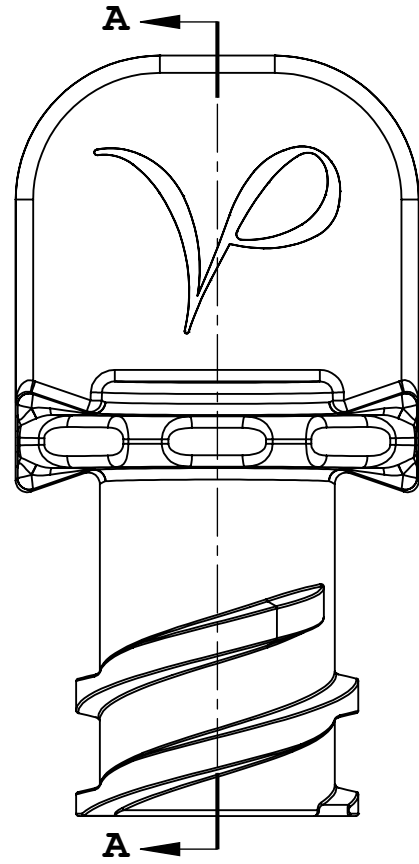


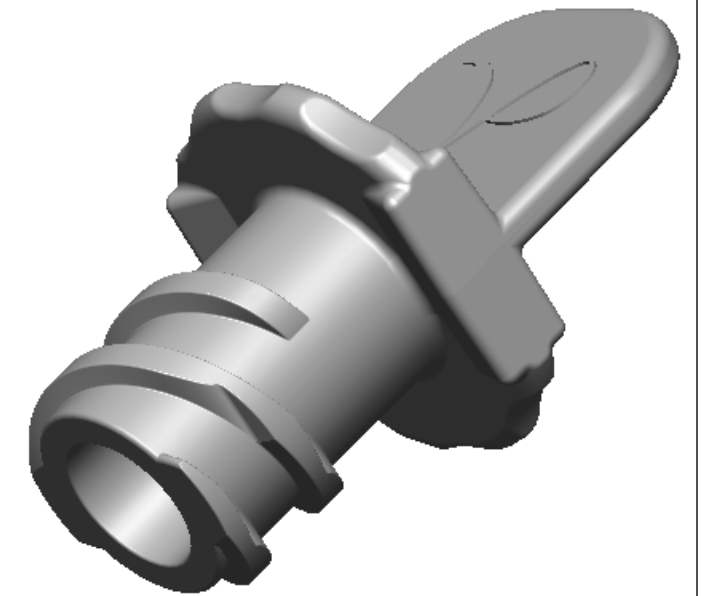
NOTES: FOR ADDITIONAL DETAILS, PLEASE CONTACT VP CUSTOMER SERVICE

1. DIMENSIONS MARKED  $\text{\textcircled{\hspace{1em}}}$  ARE CONTROL DIMENSIONS
2.  $\text{\textcircled{MUST USE CG101 INSPECTION GAGE FOR TAPER}}$
3.  $\text{\textcircled{MUST USE S69 INSPECTION GAGE FOR THREADS}}$

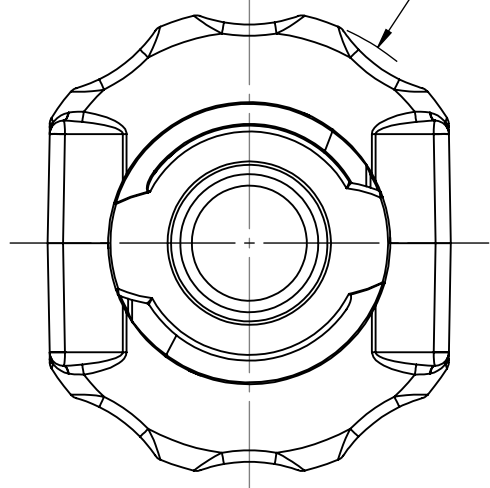
REVISIONS			
REV.	DESCRIPTION	DATE	APPROVED
A	INITIAL RELEASE	04-20-16	FJL
B	ECO 336	12-05-16	FJL



**SECTION A-A**



$\text{\textcircled{\hspace{1em}}} \phi .406 \pm .015$



UNLESS OTHERWISE SPECIFIED DIMENSIONS ARE IN INCHES TOLERANCES ARE:		<b>VALUE PLASTICS, INC</b>			
FRACTIONS    DECIMAL    ANGULAR ±            .XX ±.01            ± 1° .XXX ±.005 .XXXX ±.001		PART NUMBER: NEFC			
DO NOT SCALE DRAWING		DESCRIPTION: Neuraxial Female Cap fits Male Connector			
DRAWN BY: Pete L.	DATE: 12/7/2016	SIZE: <b>B</b>	SCALE: NTS	VER: 	DWG. NO. 1039555
MANAGER: Frank.Lombardi		© 2014 VALUE PLASTICS, INC			REV B
				SHEET: 1 OF 1	

**FOR REFERENCE ONLY**